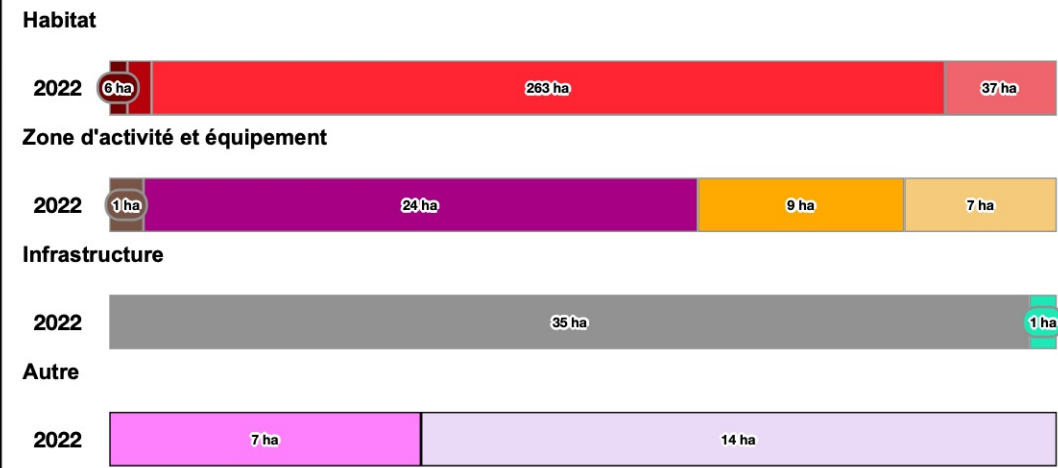
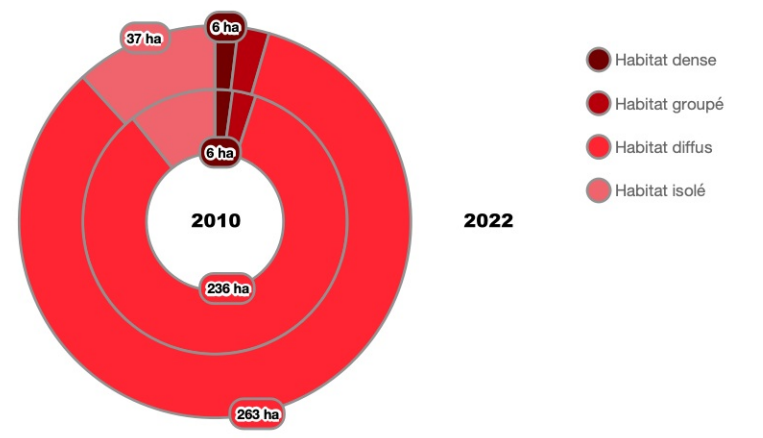


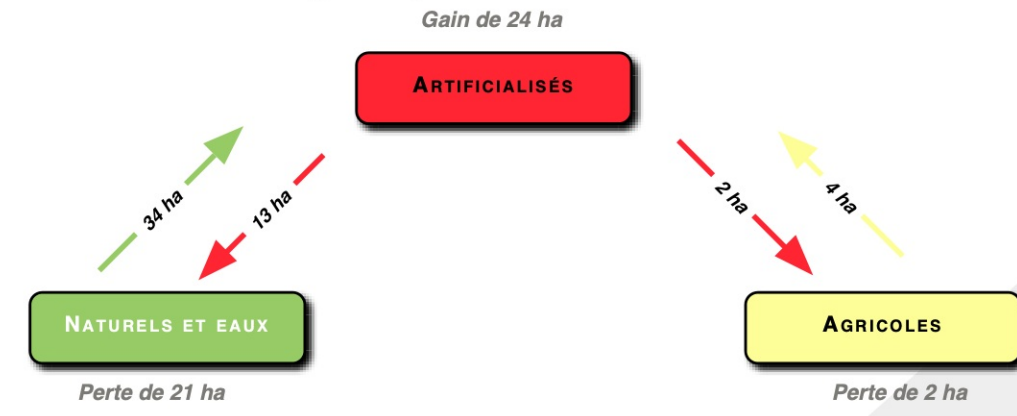
### Répartition de l'artificialisation du sol en 2022 (en hectares)

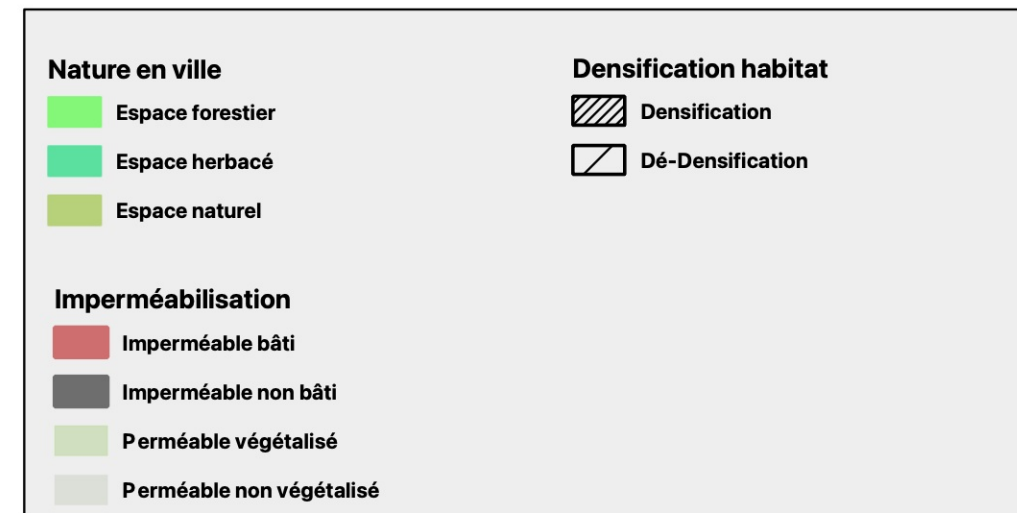
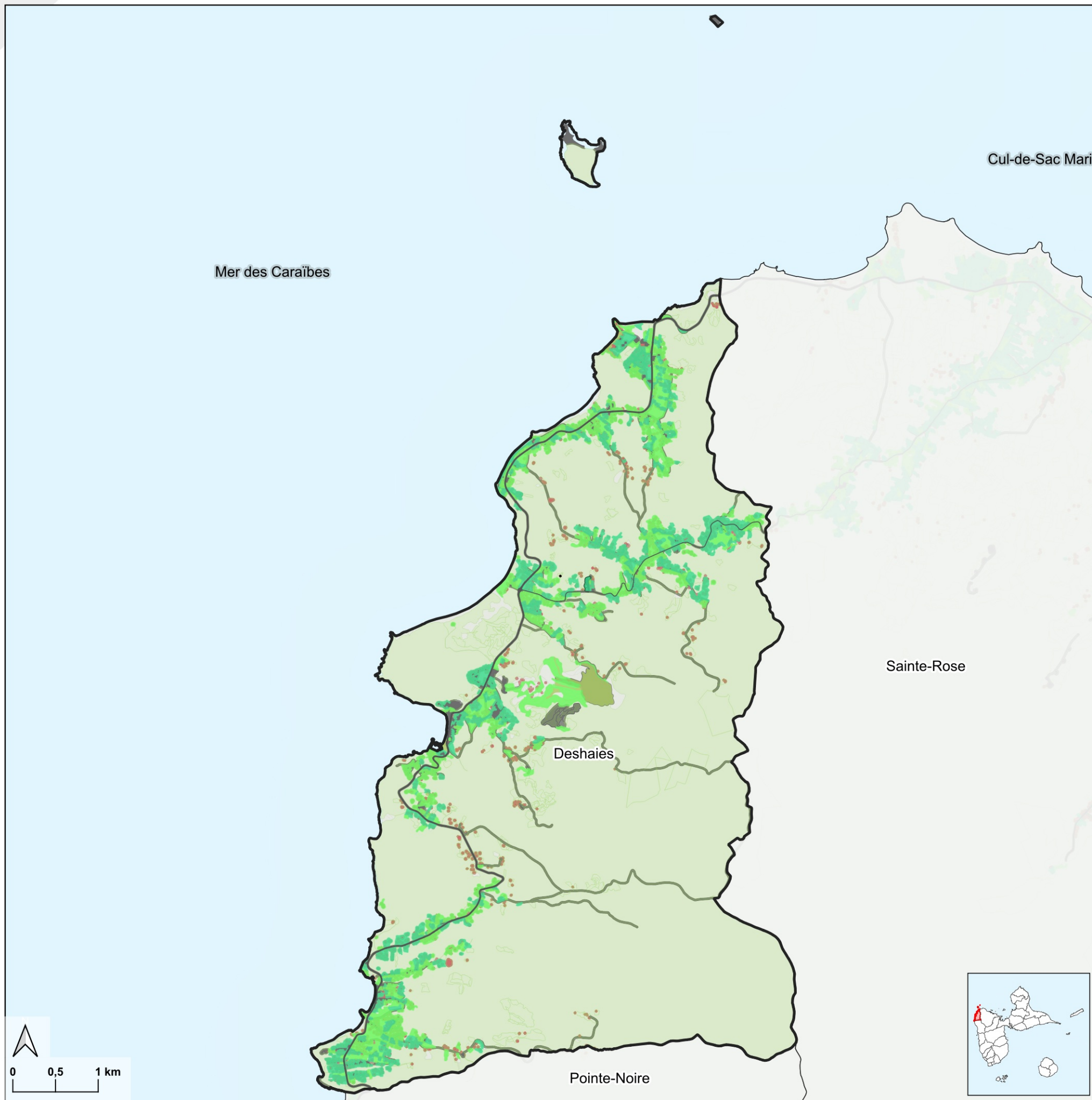


### Densité résidentielle

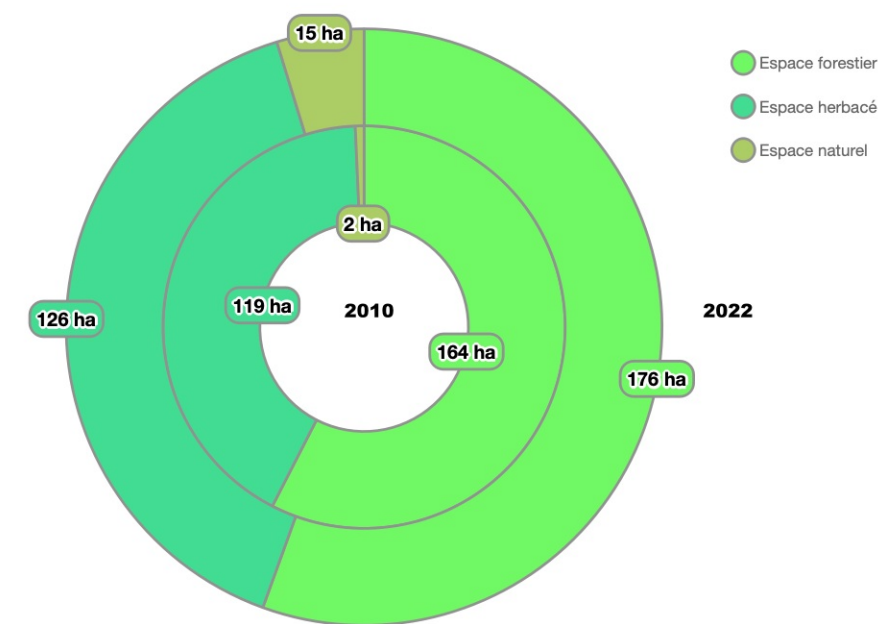


### Dynamique d'artificialisation





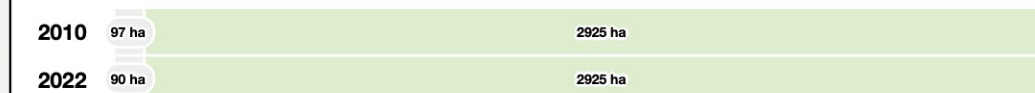
**Nature en ville 2010 et 2022 (en hectares)**

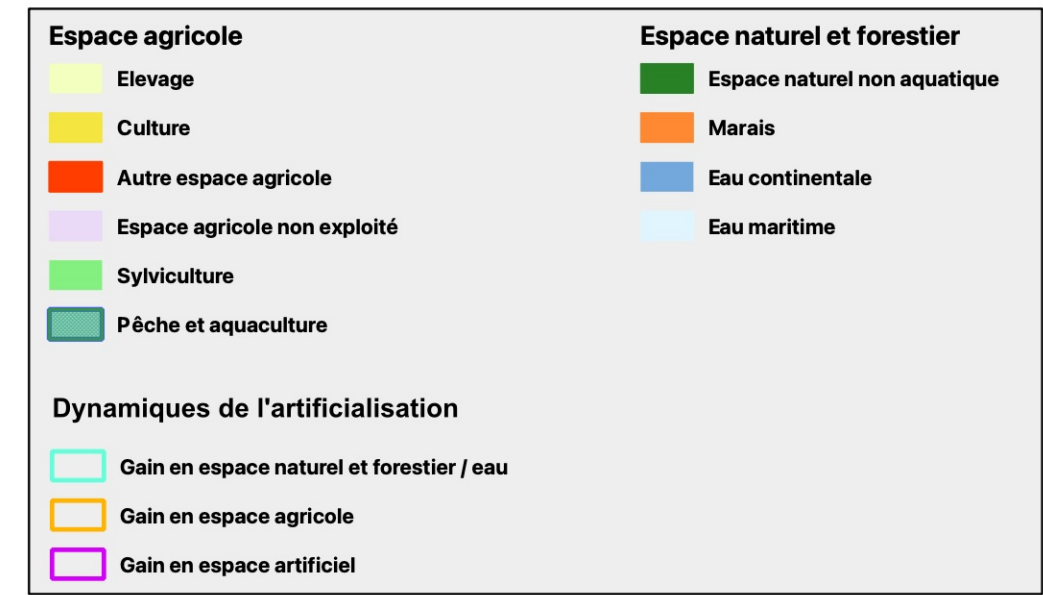
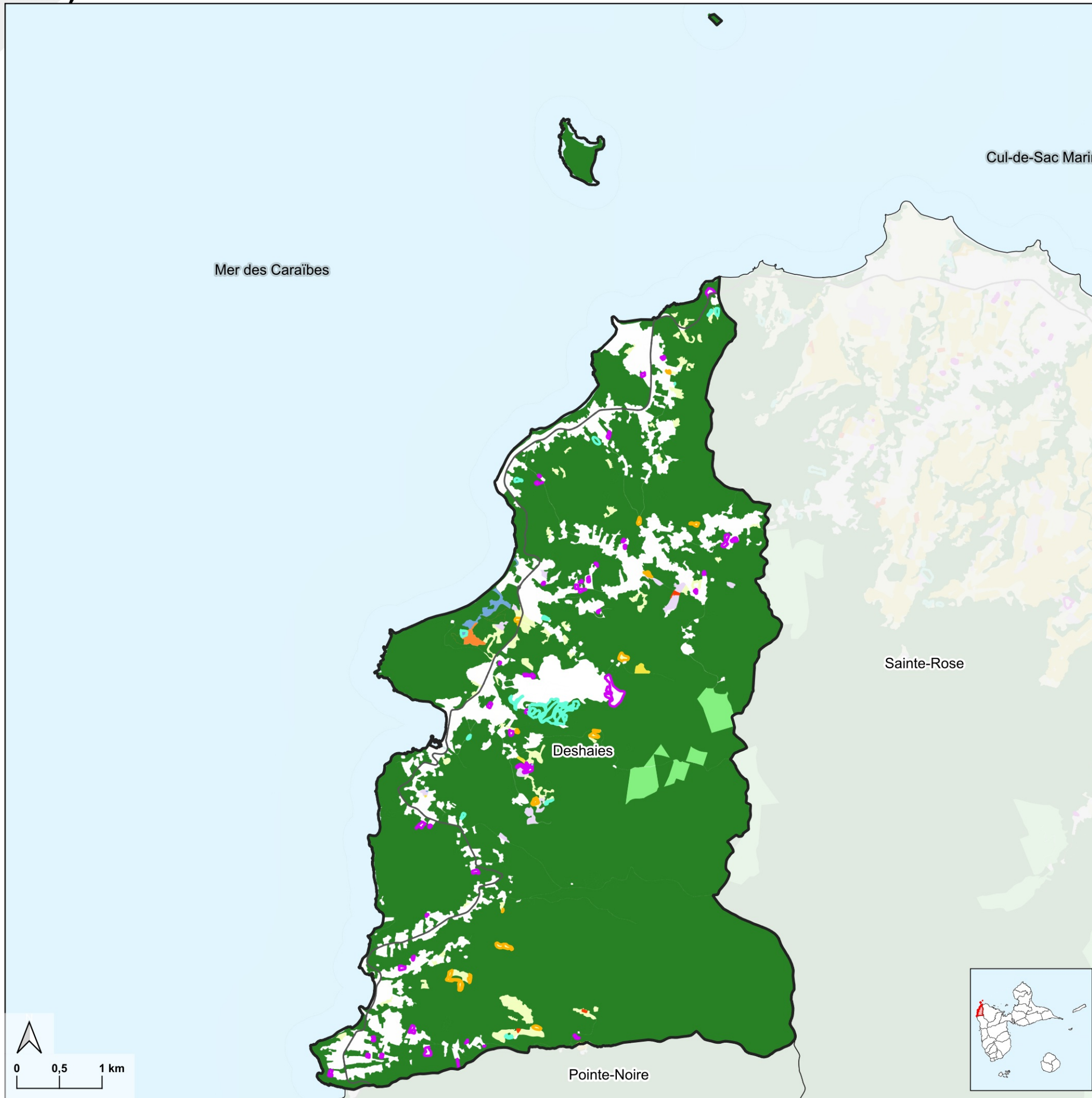


**Imperméabilisation**

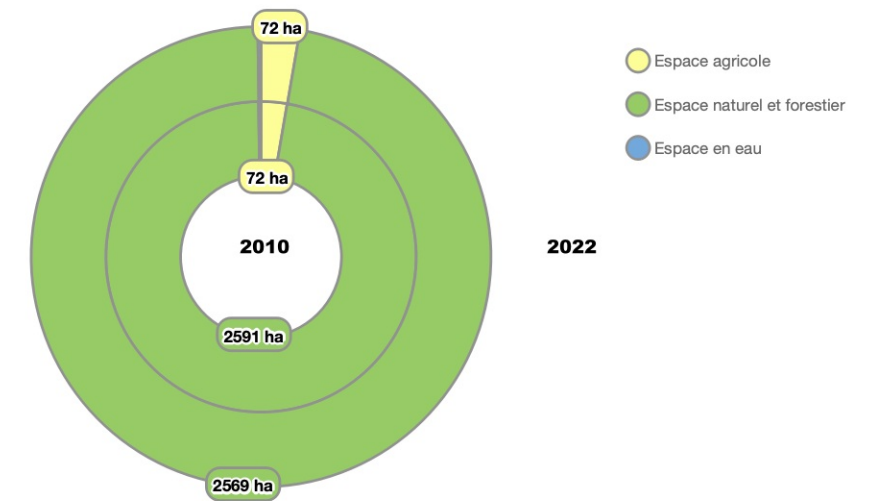


**Perméabilisation**

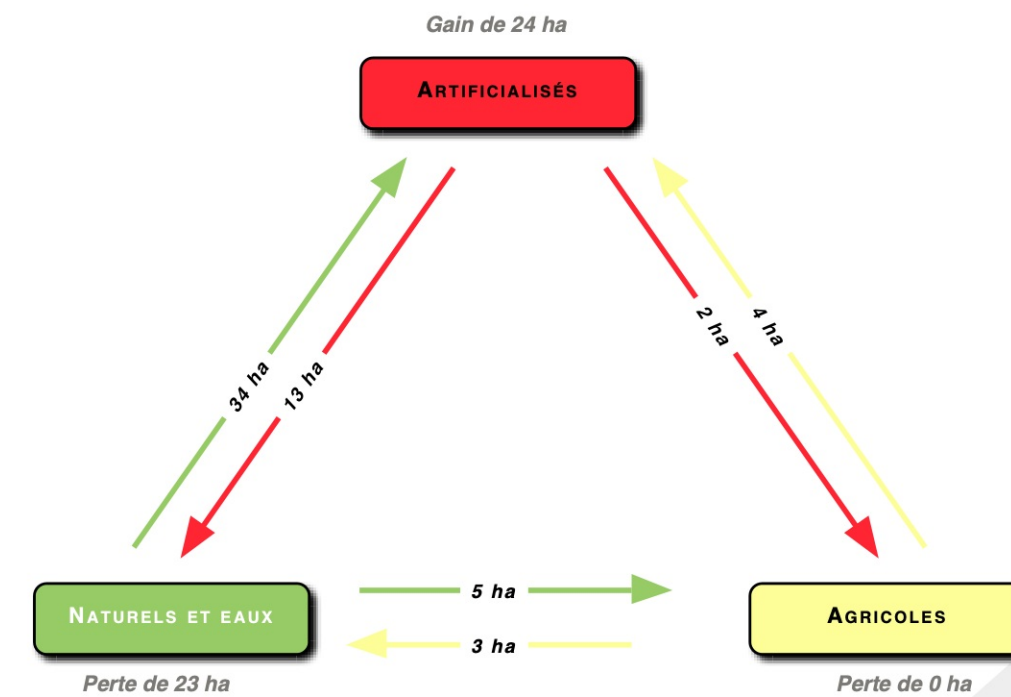


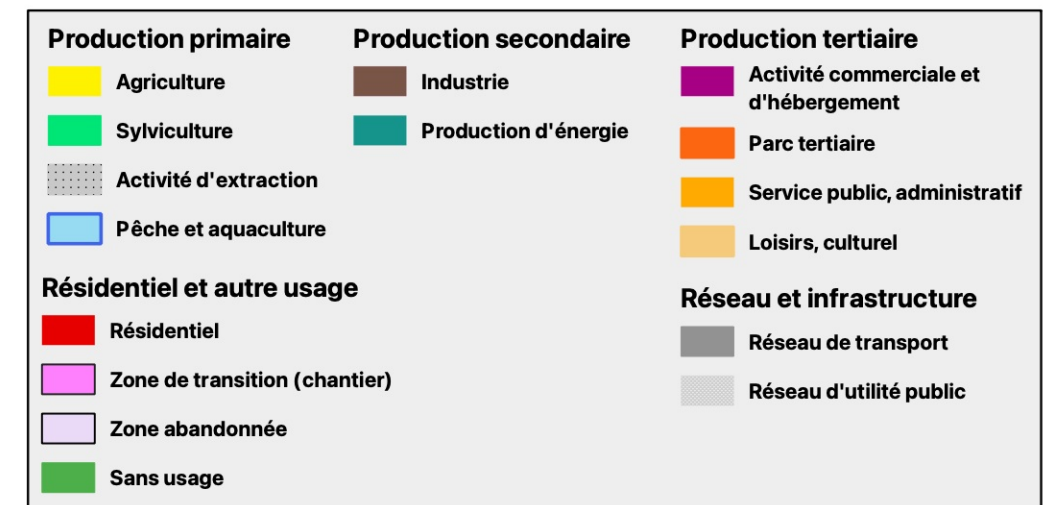
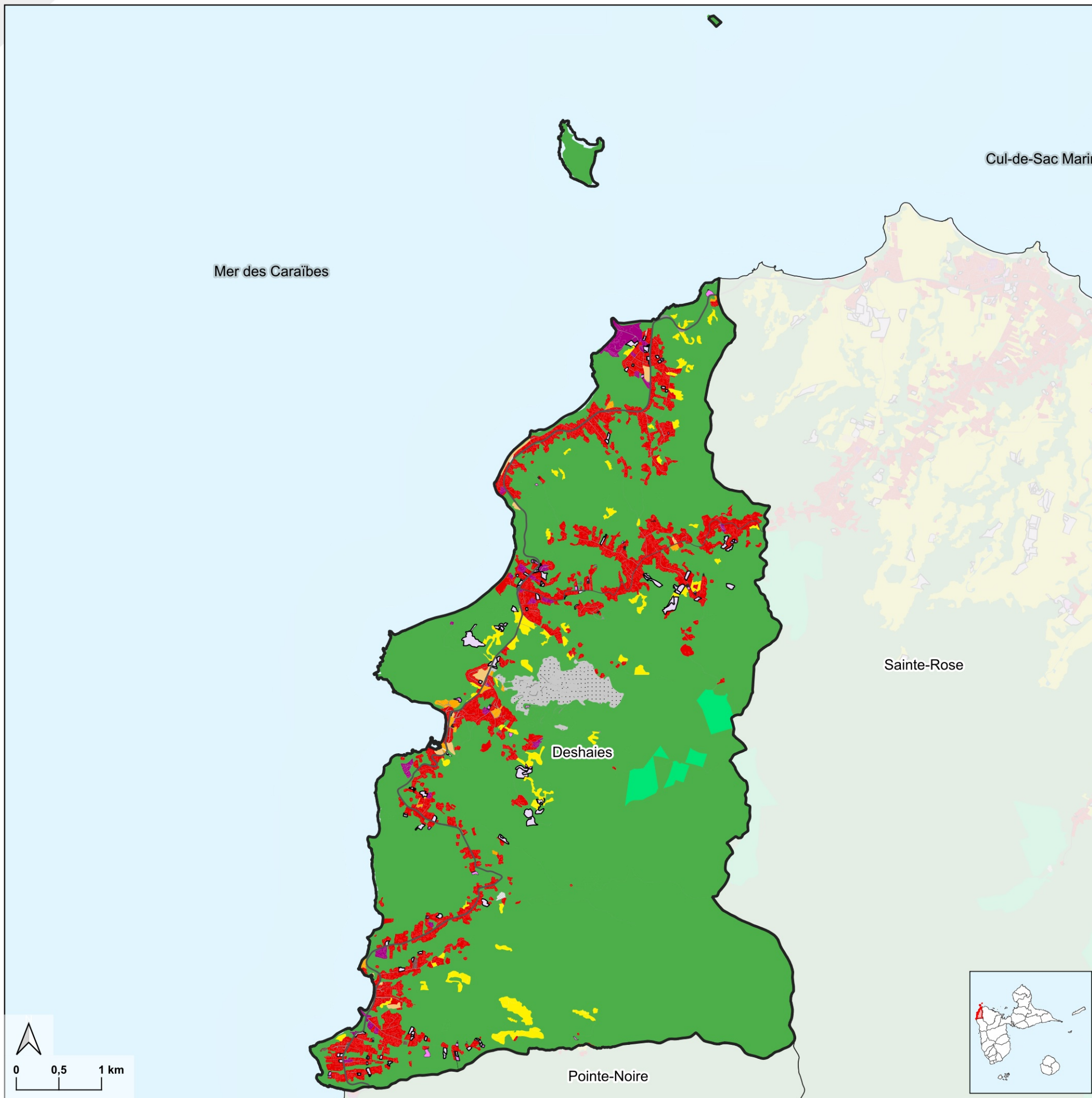


## Composition et évolution des espaces naturels et en eau (2010 et 2022)

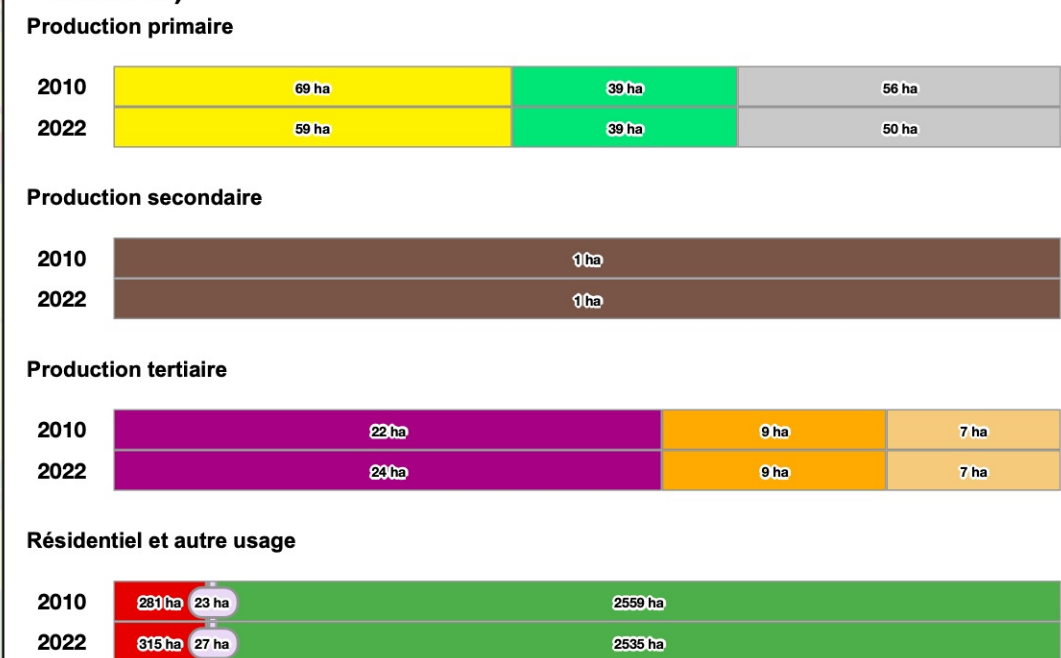


## Dynamiques de changements

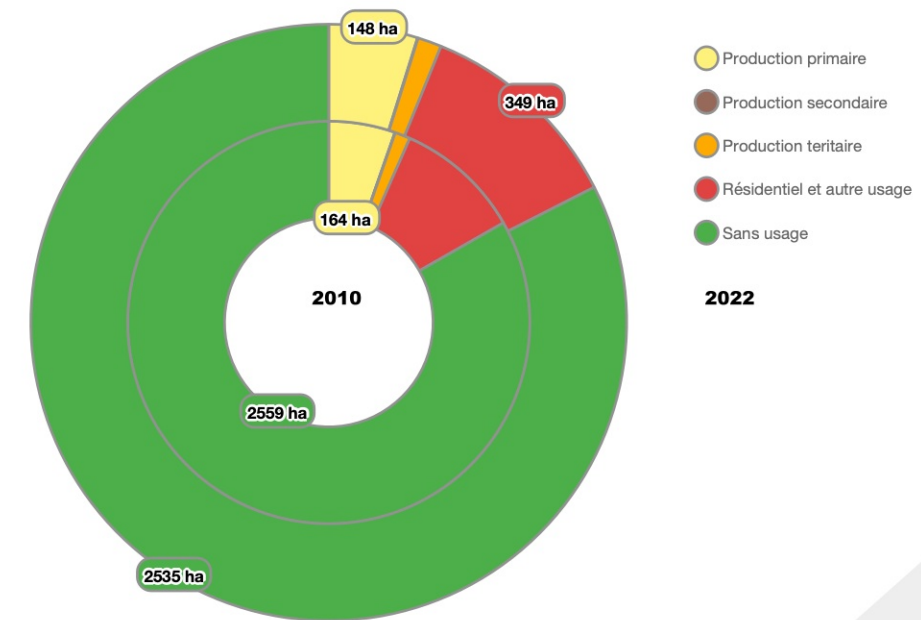




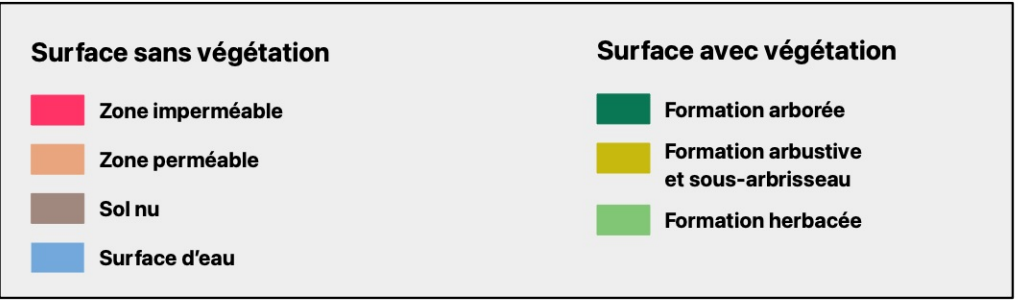
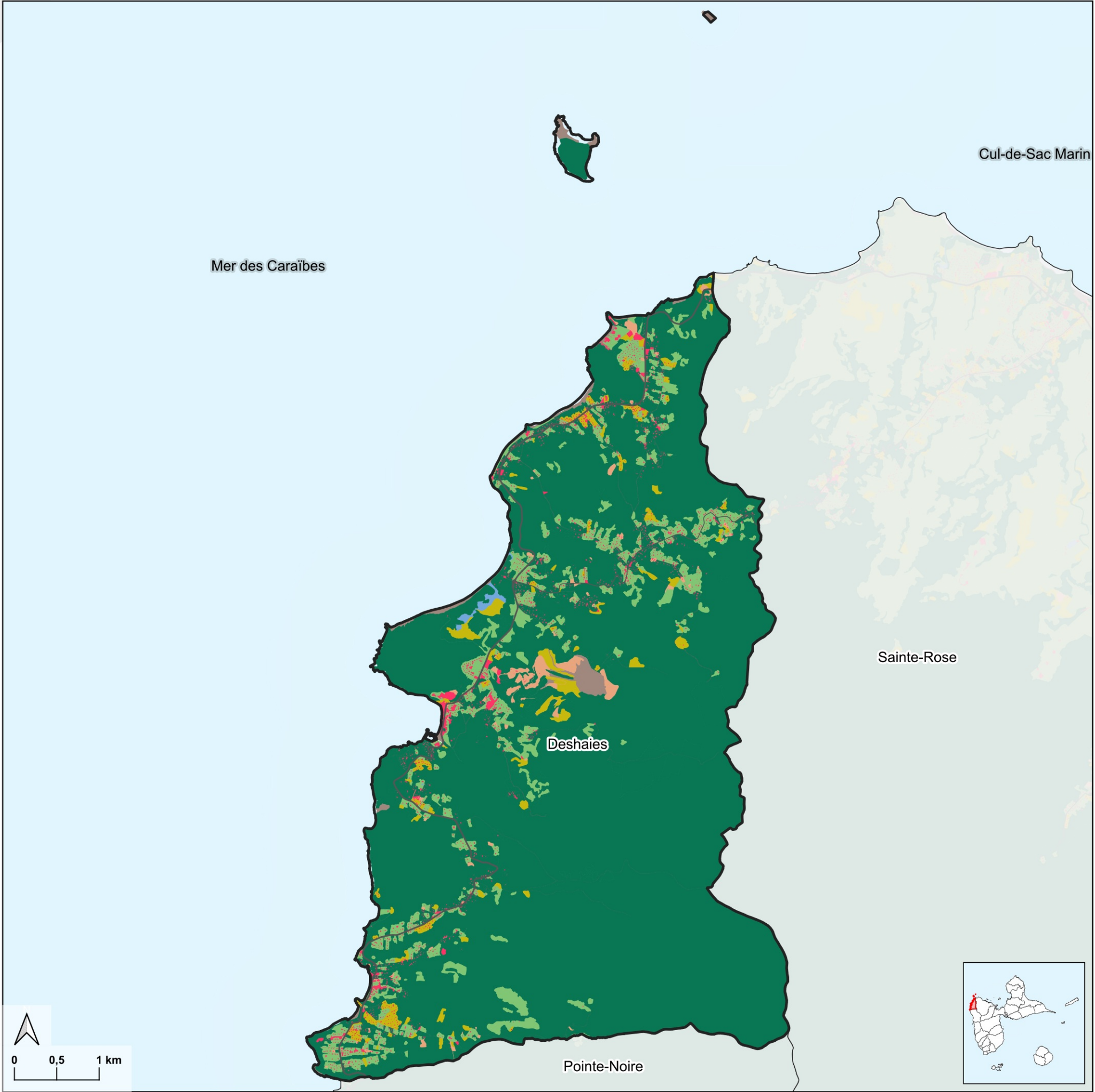
## Evolution de l'usage du sol en 16 postes entre 2010 et 2022 (en hectares)



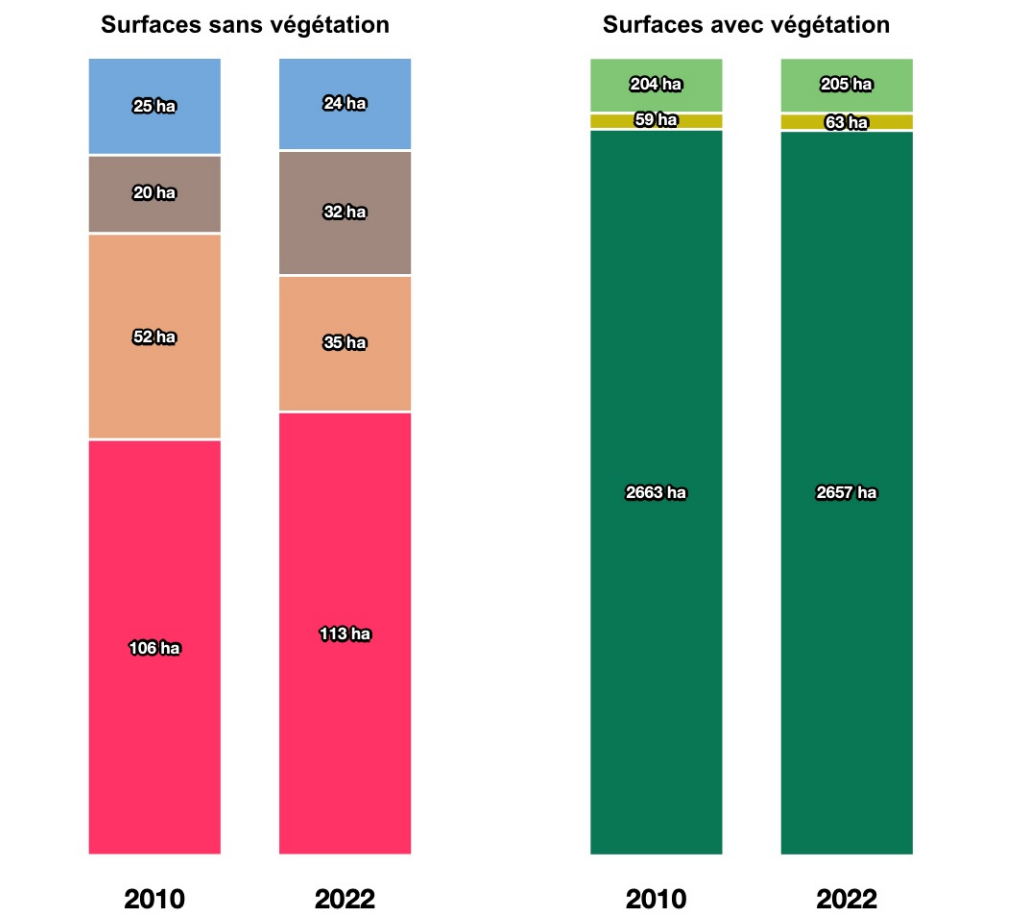
## Evolution des surfaces entre 2010 et 2022 pour les 5 grands types d'espace



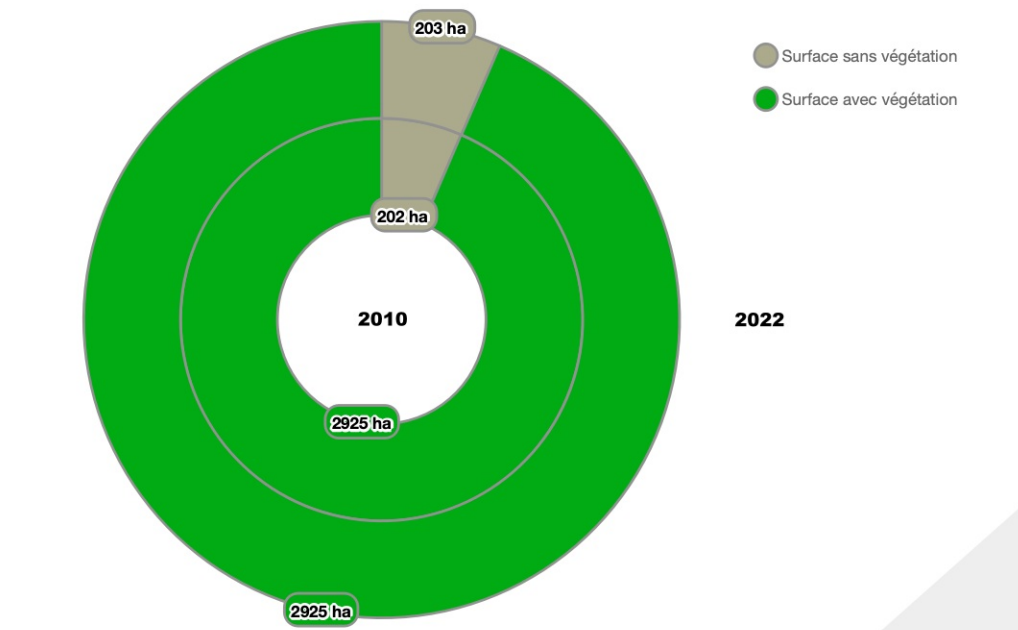
Couverture du sol en 2022 (composition et évolution avec 2010)



Evolution de l'usage du sol en 7 postes entre 2010 et 2022 (en hectares)



Evolution des surfaces sans végétation et avec végétation entre 2010 et 2022



Sources : IGN BD Topo 2018 ; Base OCS KaruCover millésime 2010/2022  
Réalisation : CLS, Cartophyl, 2024